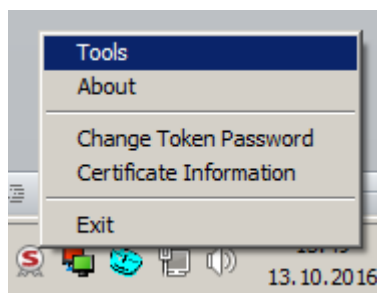


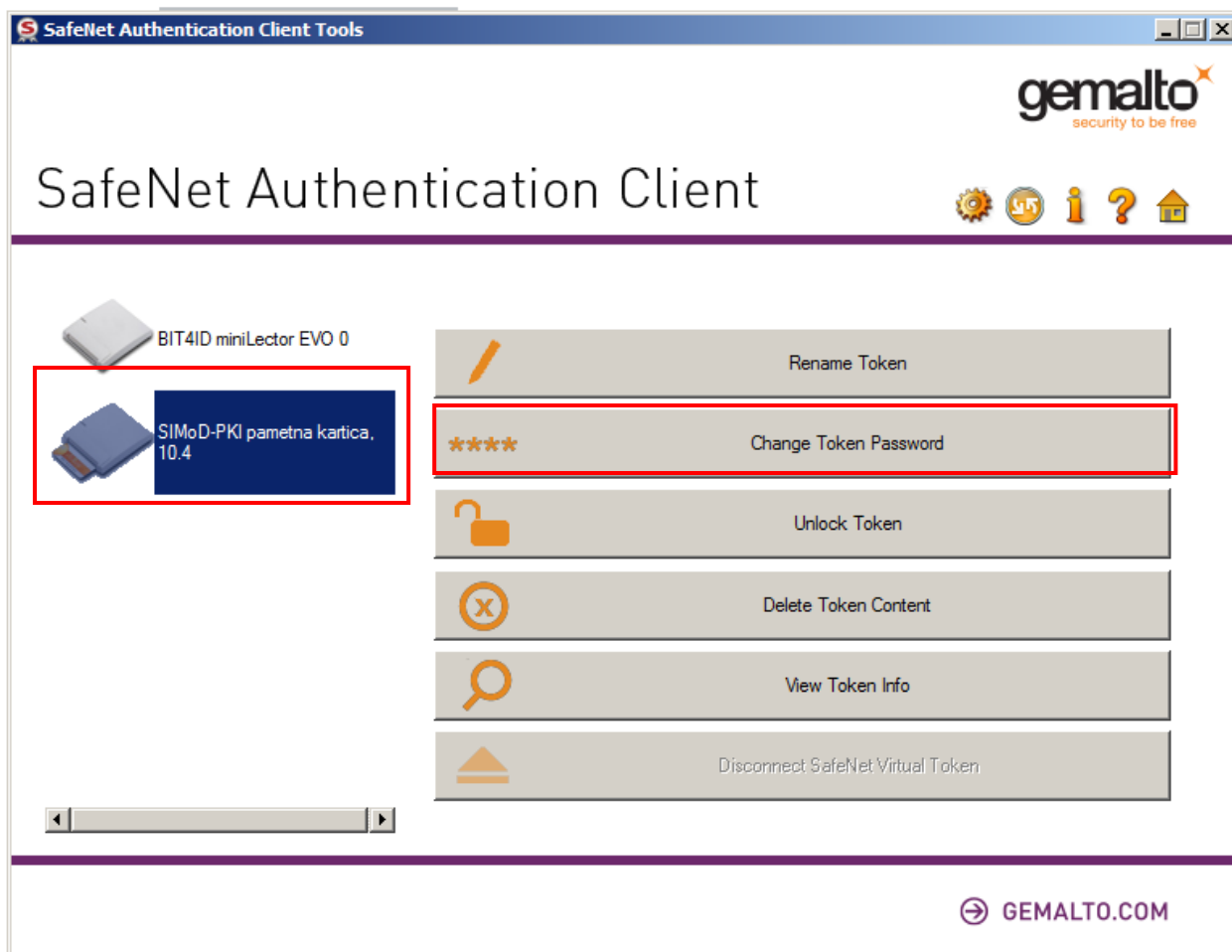
## Določitev gesla za pametno kartico GEMALTO IDPrime MD 840

Od overitelja digitalnih potrdil na MO ste prejeli inicializirano pametno kartico z naključnim uporabniškim geslom, ki ga morate ob prvi uporabi spremeniti.

Do funkcij upravljanja s pametno kartico pridemo z desnim klikom po ikoni " SafeNet Authentication Client " in izberemo "Tools":



Odpre se okno SafeNet Authentication Client. Označite pametno kartico in kliknite »Change Token Password« :



Pojavi se pojavno okno:

Change Password: SIMoD-PKI pametna kartica, 10.4

SafeNet Authentication Client **gemalto**  
security to be free

Current Token Password:

New Token Password:

Confirm Password:

The new password must comply with the quality settings defined on the token.

A secure password has at least 8 characters, and contains upper-case letters, lower-case letters, numerals, and special characters (such as !, \$, #, %).

Current Language: **SL**

Enter your current password.

OK Cancel

V polje »**Current Token Password**« vpišite trenutno geslo. V polje "**New Token Password:**" vnesite geslo, ki ga boste uporabljali za aktivacijo pametne kartice. Geslo potrdite v polju "**Confirm Password:**". Zaključimo s klikom na »OK«.

Uporabniško geslo mora biti dolgo vsaj 6 znakov.

Change Password: SIMoD-PKI pametna kartica, 10.4

SafeNet Authentication Client **gemalto**  
security to be free

Current Token Password:

New Token Password:

Confirm Password:

The new password must comply with the quality settings defined on the token.

A secure password has at least 8 characters, and contains upper-case letters, lower-case letters, numerals, and special characters (such as !, \$, #, %).

Current Language: **SL**

OK Cancel